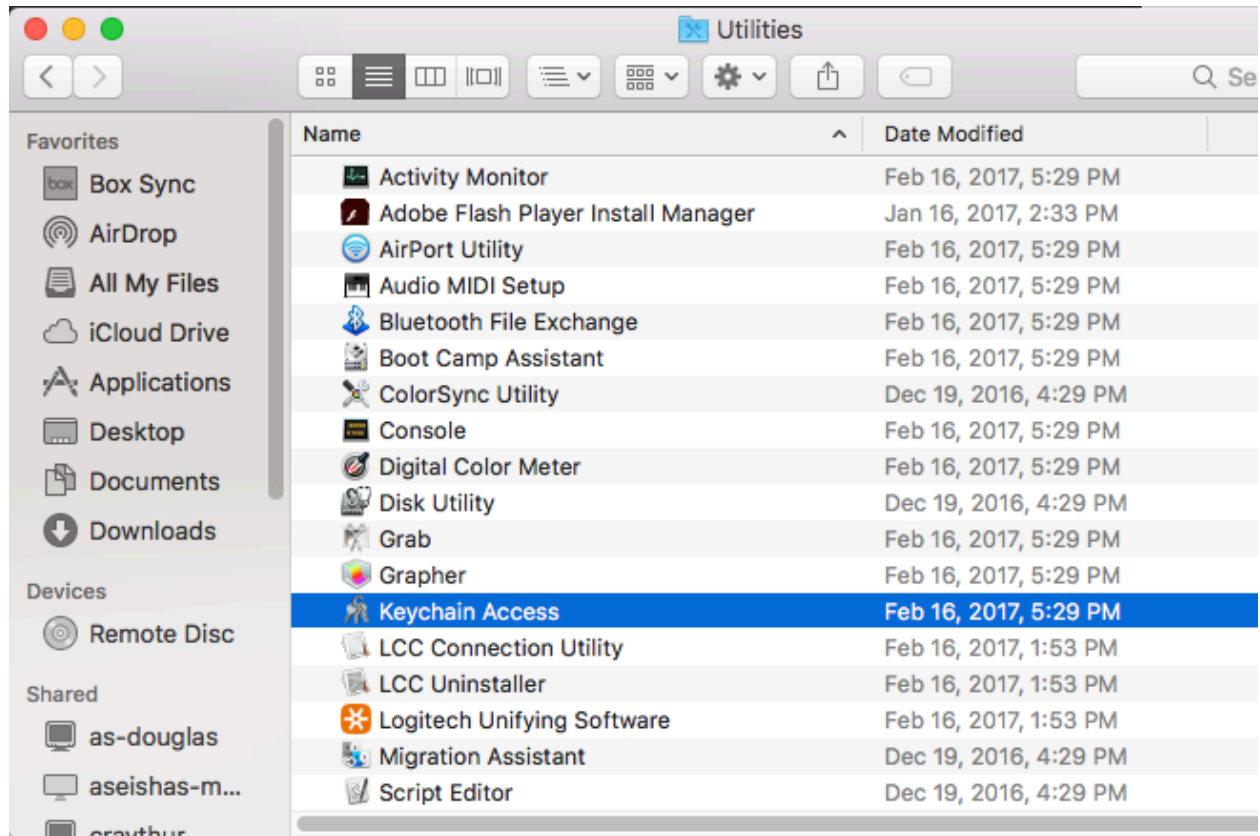


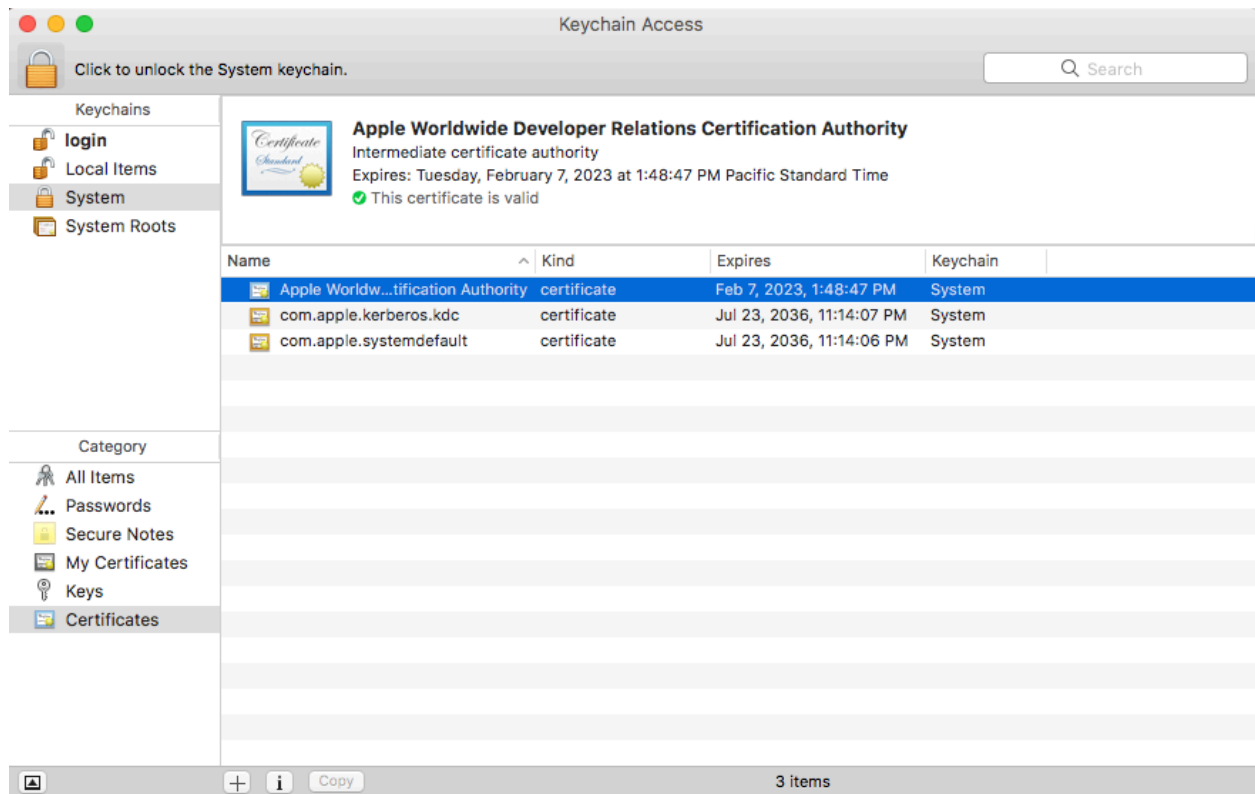
## Installing the Etkin Lab CA on a Mac

Step 1: Launch Keychain Access (it's under Applications, in the Utilities folder).

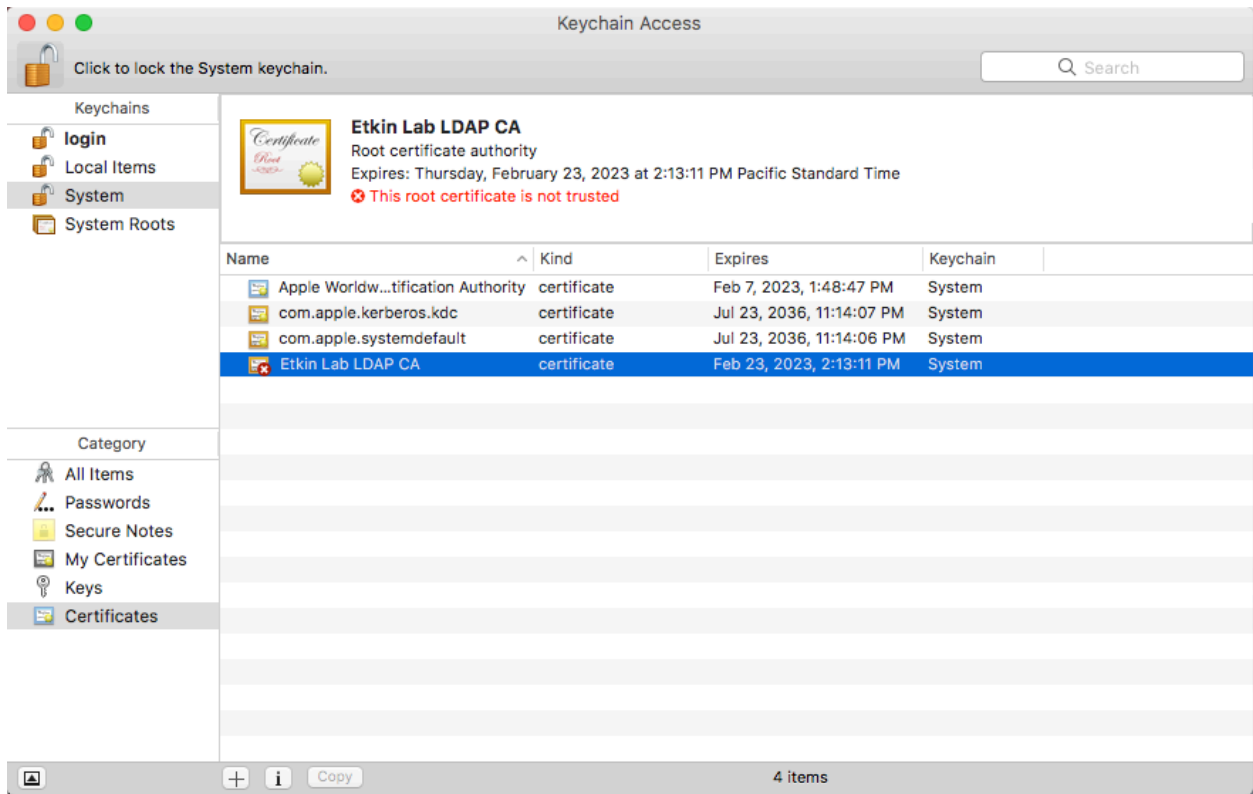


Step 2: Go to the *System* keychain (upper-left corner), and select *Certificates* (bottom-left).

In order to make changes, you will need to “unlock” the keychain. To unlock the keychain, click on the big lock icon (upper-left). You will need admin credentials on the system.



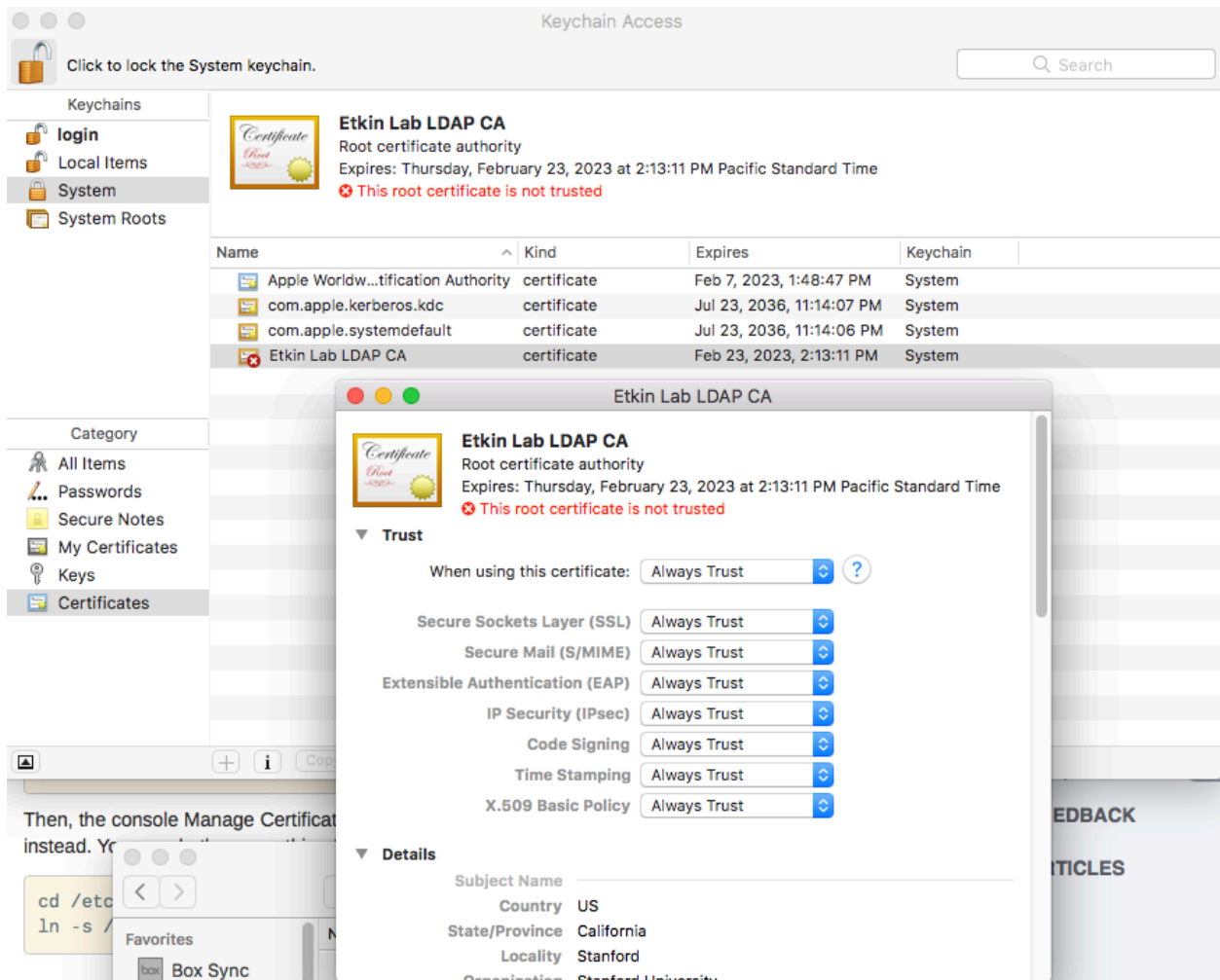
Step 3: Drag the 'Etkin Lab CA.crt' file into the cert list. The cert will be added, but it will be marked red.



Step 4: Select the certificate and click on the little 'i' button which appears at the bottom of the window.

When you click on the little 'i' button, a pop-up window will appear.

In the pop-window, change the first drop-down (*When using this certificate*) from "Use System Defaults" to "Always Trust".



Step 5: Close the pop-up window. You will again be asked for admin credentials. Once credentials are entered, the pop-up window will close and the red cert marking will disappear.

You may now exit the Keychain Access application. You're done!